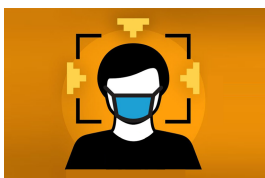
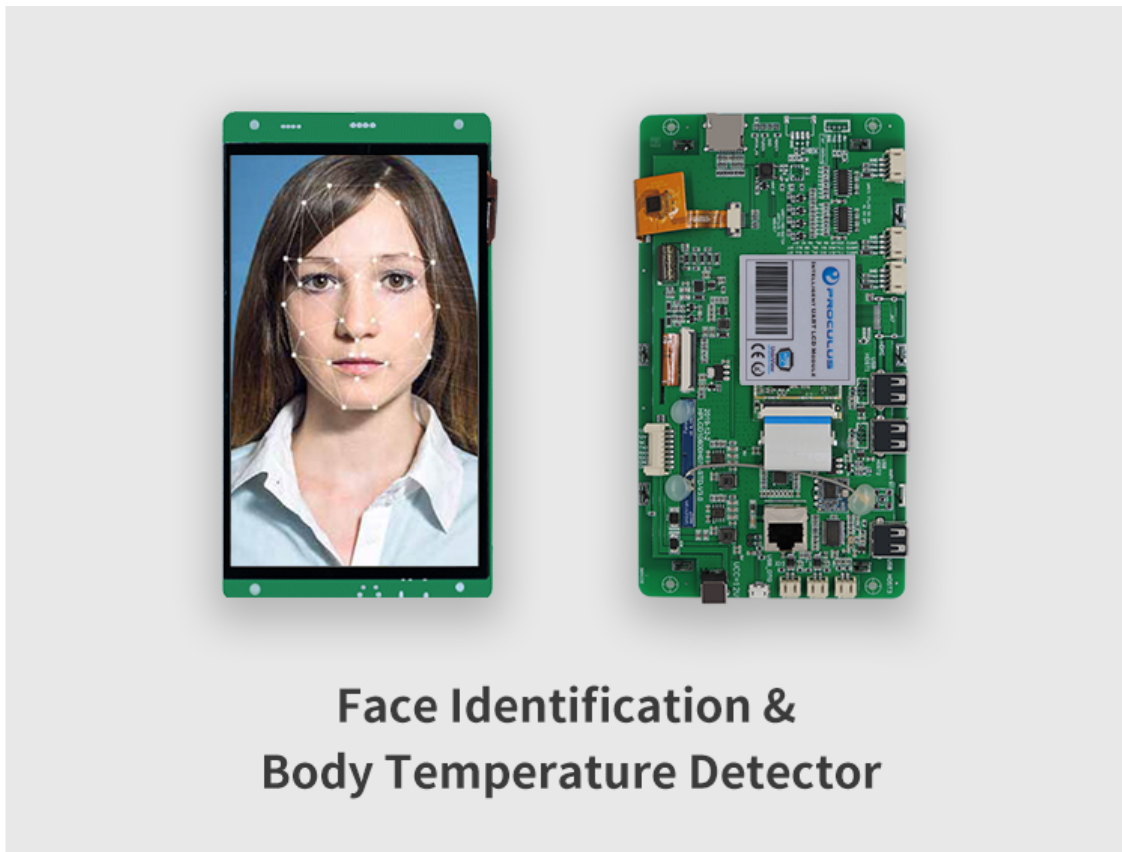
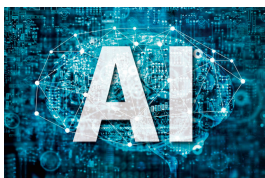


[View this email in your browser](#)

FACIAL RECOGNITION TERMINAL 7 INCHES LCD MODULE COMING SOON



Face Recognition Terminal is a kind of access control device for face recognition, which is mainly applied in security access control systems, such as logistic centers, airports, university campuses, dwellings, etc.



A Face Recognition Terminal adopts a deep learning algorithm that recognizes the face faster and more accurately. It can apply to the scenarios of buildings, businesses, financial industries, and other important areas.

Application Scenarios

Subscribe

Past Issues

Translate ▼



attendance machine



Shopping mall



Office building



Gym



Door control

You can develop your app by yourself or use our dedicated APP development service.

General App Development Platform.
Open SDK & Root Access



Leave the software development to our experts.

[Subscribe](#)[Past Issues](#)[Translate](#) ▼

CPU:	1.8GHz Quad-core A17 ARM
RAM:	2GB DDR3
Rockchip:	RK3288
Operation System:	Android 5.1/8.1
LCD Screen:	7-inch LCD Touch Screen
Resolution:	1024*600
Accuracy Rate:	>99%
Face Recognition Distance:	0.3 m to 1 m
Camera:	2 MP Dual-Lens Camera; 1080p; Auto-Focus;
Target height :	1.4 m - 1.9 m (4'7" - 6'3")

Intelligent Uart & Android LCM



Copyright © 2020 Proculus Technologies, All rights reserved.

Want to change how you receive these emails?
You can [update your preferences](#) or [unsubscribe from this list](#).

