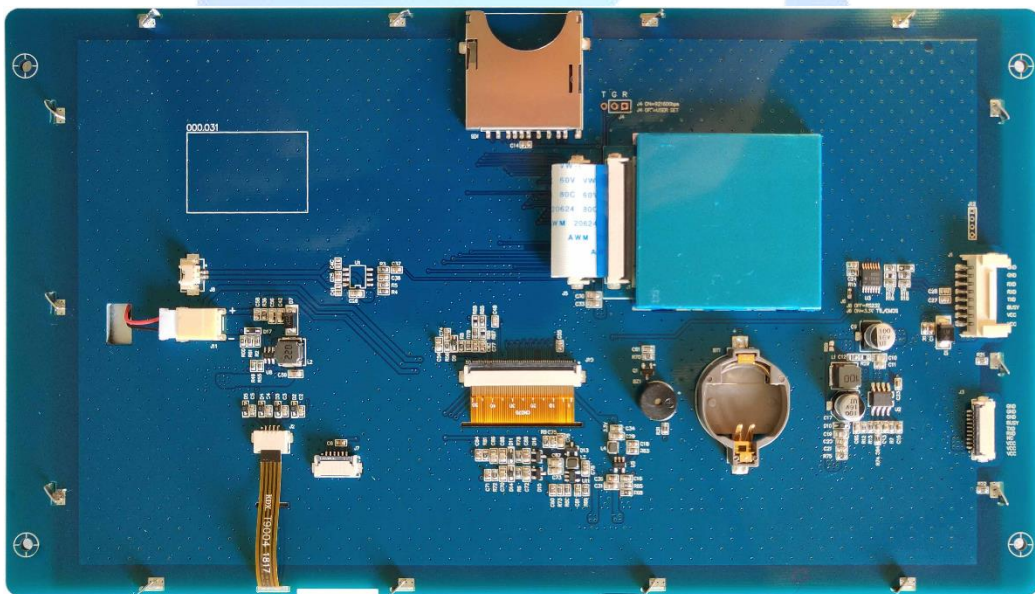


# P10600J101C\_X01

(X can be defined as N/T/P; N=No Touch/T=Resistive Touch/P=Pcap Touch)

## 10.1 Inches, 1024xRGBx600, 65K Colors



### Modification Record

Date	Content
2016/11/01	First release
2024/08/08	Fix model error

## Features

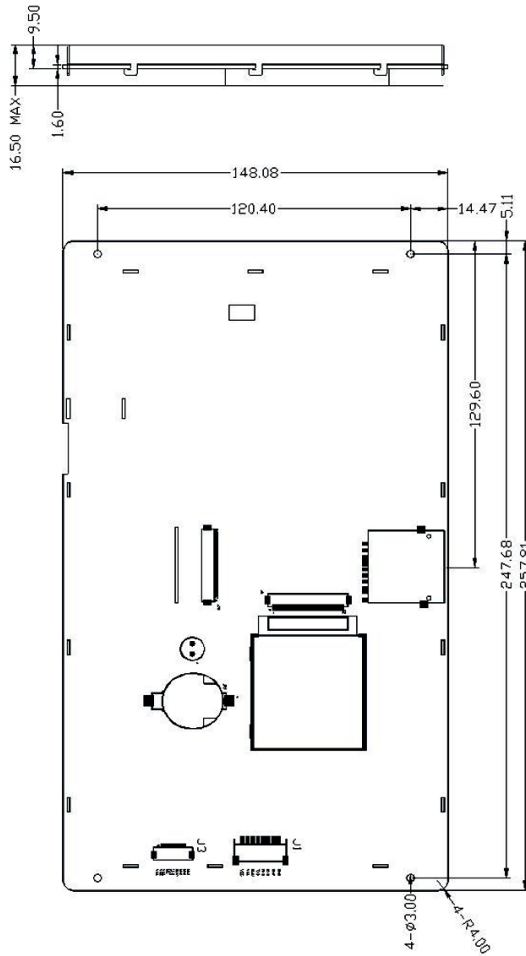
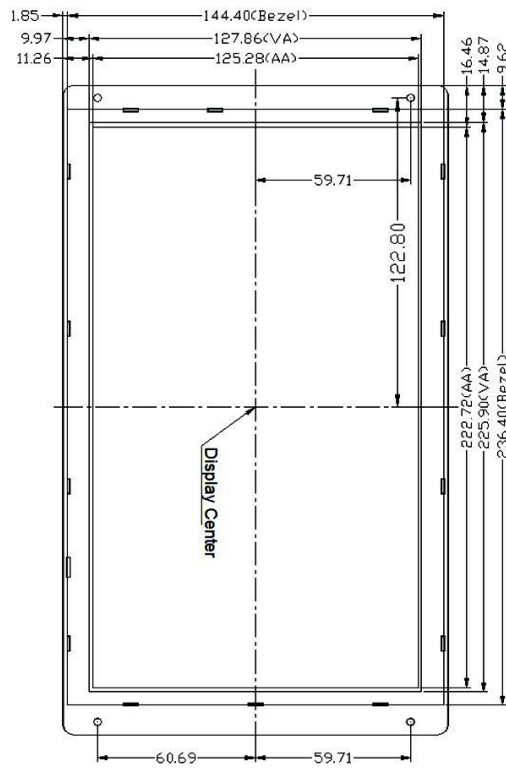
- Support RS232/TTL/CMOS, the max baud rate is 921600bps;
- Support audio
- Support hardware JPG decoding which makes storage more efficient and display quicker;
- Support offline batch download through USB Flash Drive, which improves download efficiency and reduce requirements for operators;
- Support backlight brightness adjustment and automatic standby screen saver function;
- Support multi-language font library, picture, TWO-DIMENSIONAL code display;
- Support number and English input, customizable keyboard interface;
- Support 90 degrees, 180 degrees, 270 degrees screen rotation, adjustable visual angle;
- Easy-to-use UnicView GUIs Development, no coding skills required;
- Instant operation when power on without system load time;
- Excellent electromagnetic compatibility characteristics.



Display					
<b>Color</b>	65K (65536) colors, 16 bit color 5R6G5B				
<b>ACTIVE AREA / View Area</b>	222.7mm(width)×125.3mm(height)/225.9 mm(width)×127.9mm(height)				
<b>Resolution</b>	1024*600, 90° rotated display (600*1024)				
<b>Backlight /Lifecycle/Brightness</b>	LED/20,000 HOURS/ 300 cd/m <sup>2</sup> / (64 level adjustment)				
<b>Working Temperature</b>	-20~+70°C/-30~+85°C				
Voltage & Current					
Item	Condition	Min.	Typ.	Max.	Unit
<b>Power Voltage</b>		-	12	-	V
<b>Operation Current</b>	VIN = 12V, Backlight on	-	350	-	mA
	VIN = 12V, Backlight off	-	170	-	mA
Recommended Power Supply: 12V 1A DC					
Interface					
Item	Condition	Min.	Typ.	Max.	Unit
<b>Baud Rate</b>	Standard	1200	115200	921600	bps
	User Defined	1200	-	921600	bps
<b>Output Voltage (TXD、BUSY)</b>	Output 1,Iout=1mA	3.0	3.2	-	V
	Output 0,Iout=-1mA	-	0.1	0.2	V
<b>Input Voltage (RXD)</b>	Input 1,Iin=1mA	2.0	3.3	15.0	V
	Input 0,Iin=-1mA	-15.0	0.0	0.3	V
<b>Interface</b>	Mode is determined by Jumper6: ON = 8N1, 3.3V TTL/CMOS; J6 OFF = 8N1, RS232				
<b>Socket</b>	HY2.0-8P/10pin,1.0mm FFC				
<b>USB</b>	Reserved (If needed, please contact our sales representative.)				
<b>SD slot</b>	Yes (SD/SDHC, FAT32 file format)				
Memory					
Item	Parameter	Min	Typ.	Max	Unit
Flash	Space of Font	-	32	-	MB
	Picture Storage (256MB)	-	-	215	Pcs
	Picture Storage (1GB)	-	-	932	Pcs
	User' s Storage	0	-	32	MB
Peripherals					
<b>Buzzer</b>	Yes				
<b>RTC</b>	Yes				
<b>Resistive touch screen</b>	Yes				
<b>SD Card</b>	Yes				

Model number	
P10600J101C_N01	No Touch
P10600J101C_T01	Resistive Touch
P10600J101C_P01	Pcap Touch
Packaging and physical dimensions	
Parameter	Data
Dimensions	257.8(width) ×148.1(height) ×16.5(thickness with TP )
Net weight of single piece	750g
Weight of whole case	TBD
Packing box size	480mm(L)×320mm(W)×230mm (H)
Packing specification	15 pieces /box





Pin Name	J3 Pin Num.	Remarks
VIN	7,8	POWER INPUT
GND	1,2	GND
DIN	4	DIN
DOUT	5	DOUT
NC	3,6	Not Defined

Part No.	P10600J101C_X01	
Datasheet	A4	Drawn by
Proportion	1:1	Verified by
Unit	mm	Confirmed by
Date		Date
Date		Date

