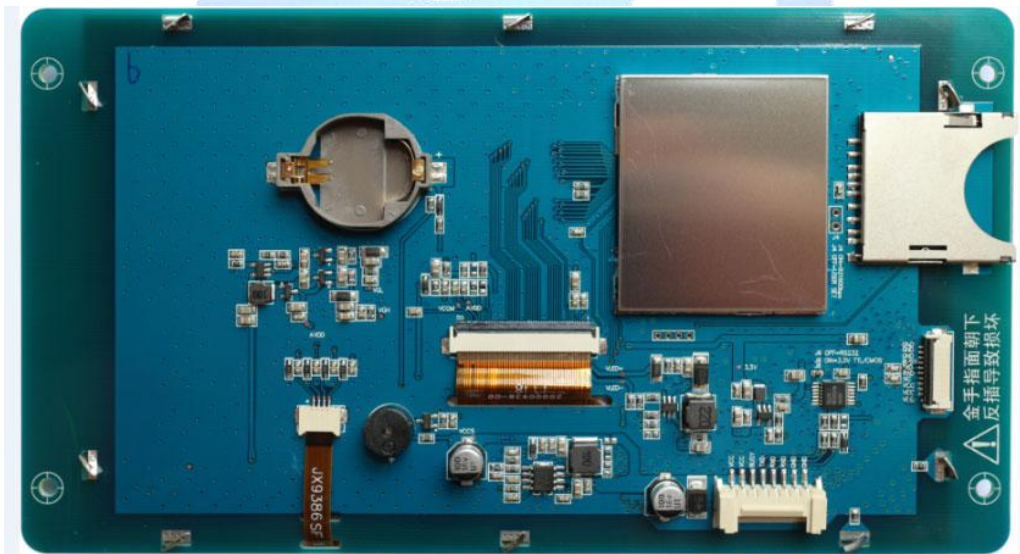


P10600J70C_X01

(X can be defined as N/T/P; N=No Touch/T=Resistive Touch/P=Pcap Touch)

7.0 Inches, 1024xRGBx600, 65K Colors



Modification Record

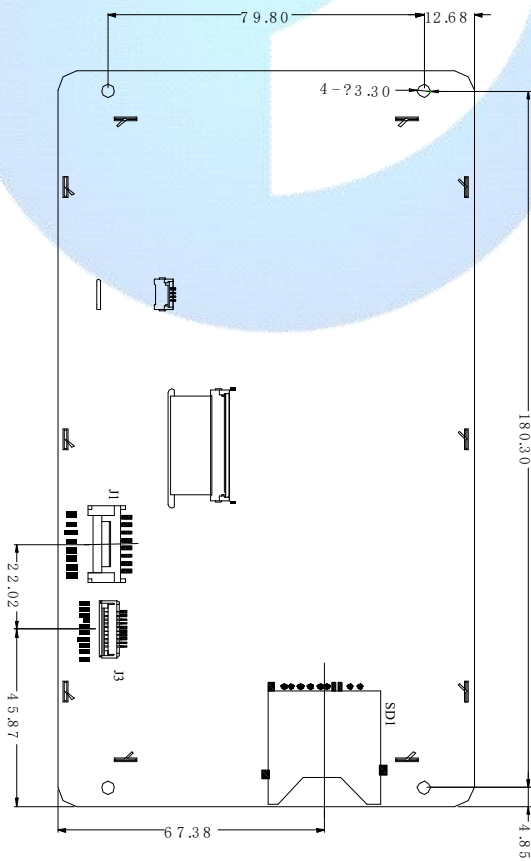
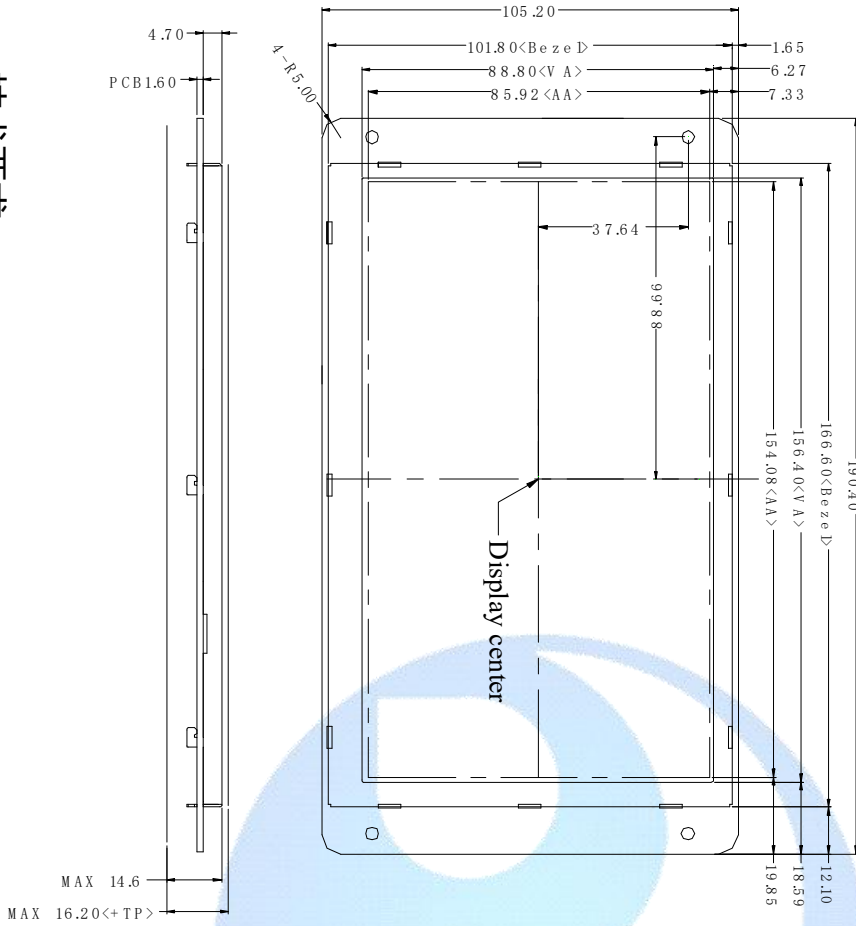
Date	Content
2016/09/05	First release

Features

- Support RS232/TTL/CMOS, the max baud rate is 921600bps;
- Support hardware JPG decoding which makes storage more efficient and display quicker;
- Support offline batch download through USB Flash Drive, which improves download efficiency and reduce requirements for operators;
- Support backlight brightness adjustment and automatic standby screen saver function;
- Support multi-language font library, picture, TWO-DIMENSIONAL code display;
- Support number and English input, customizable keyboard interface;
- Support 90 degrees, 180 degrees, 270 degrees screen rotation, adjustable visual angle;
- Easy-to-use UnicView GUIs Development, no coding skills required;
- Instant operation when power on without system load time;
- Excellent electromagnetic compatibility characteristics.

Display					
Color	65K (65536) colors, 16 bit color 5R6G5B				
ACTIVE AREA / View Area	154.1mm(width)×85.9mm(height)/156.4 mm(width)×88.8 mm(height)				
Resolution	1024*600, 90° rotated display (600*1024)				
Backlight /Lifecycle/Brightness	LED/20,000 HOURS/ 300 cd/m ² / (64 level adjustment)				
Working Temperature	-20~+70°C/-30~+85°C				
Voltage & Current					
Item	Condition	Min.	Typ.	Max.	Unit
Power Voltage		—	12	—	V
Operation Current	VIN = 12V, Backlight on	—	300	—	mA
	VIN = 12V, Backlight off	—	65	—	mA
Recommended Power Supply: 12V 1A DC					
Reliability Test					
Item	Condition	Min.	Typ.	Max.	Unit
Working Temperature	60%RH at 12V voltage	-20	25	70	°C
Storage Temperature	-	-30	25	85	°C
Working Humidity	25°C	10%	60%	90%	RH
Protective Paint	-	-	None	-	-
Aging Test	-	-	8	-	H

Interface					
Item	Condition	Min.	Typ.	Max.	Unit
Baud Rate	Standard	1200	115200	921600	bps
	User Defined	1200	-	921600	bps
Output Voltage (TXD、BUSY)	Output 1,Iout=1mA	3.0	3.2	-	V
	Output 0,Iout=-1mA	-	0.1	0.2	V
Input Voltage (RXD)	Input 1,Iin=1mA	2.0	3.3	15.0	V
	Input 0,Iin=-1mA	-15.0	0.0	0.3	V
Interface	Mode is determined by Jumper6: ON = 8N1, 3.3V TTL/CMOS; OFF = 8N1, RS232				
Socket	HY2.0-8P/10pin,1.0mm FFC				
USB	Reserved (If needed, please contact our sales representative.)				
SD slot	Yes (SD/SDHC, FAT32 file format)				
Memory					
Item	Parameter	Min	Typ.	Max	Unit
Flash	Space of Font	-	32	-	MB
	Picture Storage (128MB)	-	-	93	Pcs
	Picture Storage (256MB)			215	Pcs
	Picture Storage (1GB)	-	-	932	Pcs
	User' s Storage	0	-	32	MB
Peripherals					
Buzzer	Yes				
RTC	Yes				
Resistive touch screen	Yes				
SD Card	Yes				
Model number					
P10600J70C_N01	No Touch				
P10600J70C_T01	Resistive Touch				
P10600J70C_P01	Pcap Touch				
Packaging and physical dimensions					
Parameter	Data				
Dimensions	190.4(width) × 105.2(height) × 14.5(thickness without TP) / 16.1(thickness with TP) mm				
Net weight of single piece	TBD				
Weight of whole case	TBD				
Packing box size	480mm(L)×320mm(W)×230mm (H)				
Packing specification	30 pieces /box				



技术要求:
1.单位: mm
2.未注公差±0.3;

J3引脚编号	J1引脚编号	引脚名称	引脚类型	说明
1, 2, 3	1, 2	VCC	P	电源输入/Power input
7	3	BUSY	OUT	串口缓冲区满信号指示
6	4	TXD	OUT	RS232/TTL数据输出
5	5, 6	RXD	IN	RS232/TTL数据输入
8, 9, 10	7, 8	GND	P	公共地/GND
4	-	NC	-	未定义/Not Def:ined