

P48320HDMI035_P01

3.5 Inches, 480xRGBx320, 16.7M Colors, HDMI series

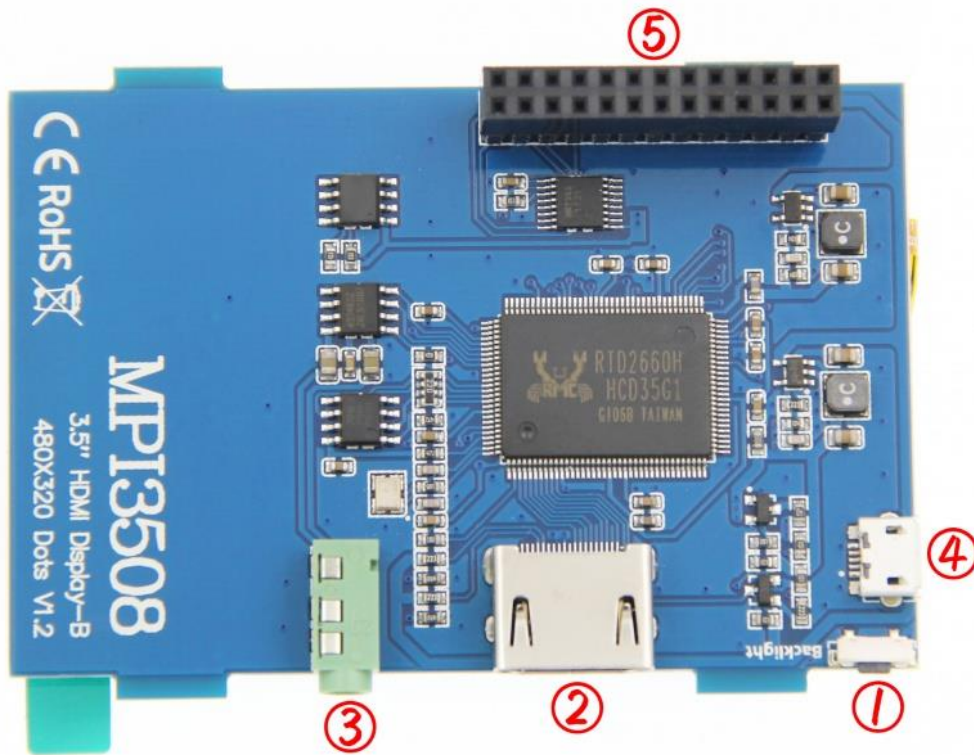


- 3.5inch standard display, support HDMI input, refresh rate above 60FPS
- Physical resolution 480x320, configurable software resolution up to 1920x1080
- It is compatible with mainstream mini PC such as Raspberry Pi, BB Black, Banana Pi
- It can also be used as a general-purpose HDMI display, connecting computers, TV boxes, Microsoft Xbox360, SONY PS4, Nintendo Switch and so on
- Used as a Raspberry Pi display that supports Raspbian, Ubuntu, Kodi, Win10 IOT, single-touch, free drive
- Work as a PC monitor, support Win7, Win8, Win10 system (No touch Function)
- Support HDMI audio output, Backlight brightness can be adjusted
- CE, RoHS certification

Parameters	
Size	3.5(inch)
Physical Resolution	480×320(dots)
Software adjustable resolution	480×320~1920×1080(dots)
Touch	Resistance Touch
Power Dissipation	0.20A*5V (Brightness @100%) 0.15A*5V (Backlight close)
Product Size	85.5*60.6(mm)
Package Size	143*134*51 (mm)
Rough Weight(Package containing)	142(g)



Interface Description



Num.	Interface Name	Description
J1	Backlight button	backlight brightness adjustment button, short press backlight changes by 10%, long press 3 seconds to close backlight
J2	HDMI interface	HDMI signal input interface
J3	Amplifier interface	HDMI audio output interface
J4	USB power supply interface	provide power for ordinary display (5V 1A)
J5	Transaction raspberry pie 26PIN base	gets power and return touch from this area when used as a raspberry pie monitor

