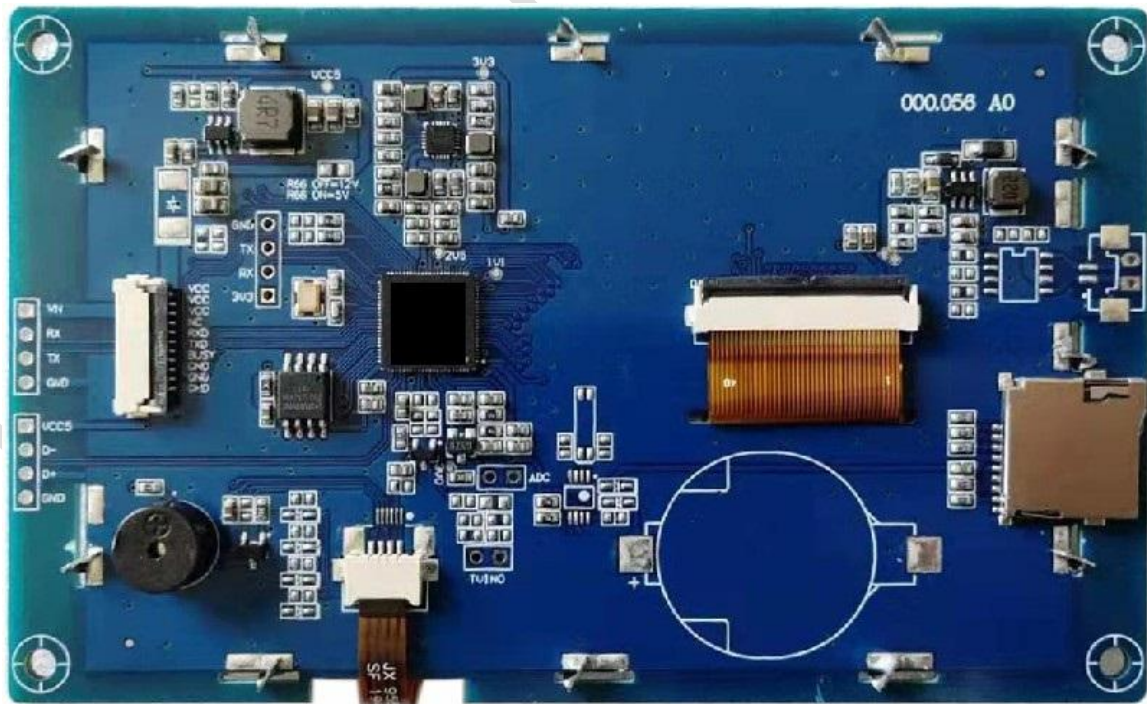
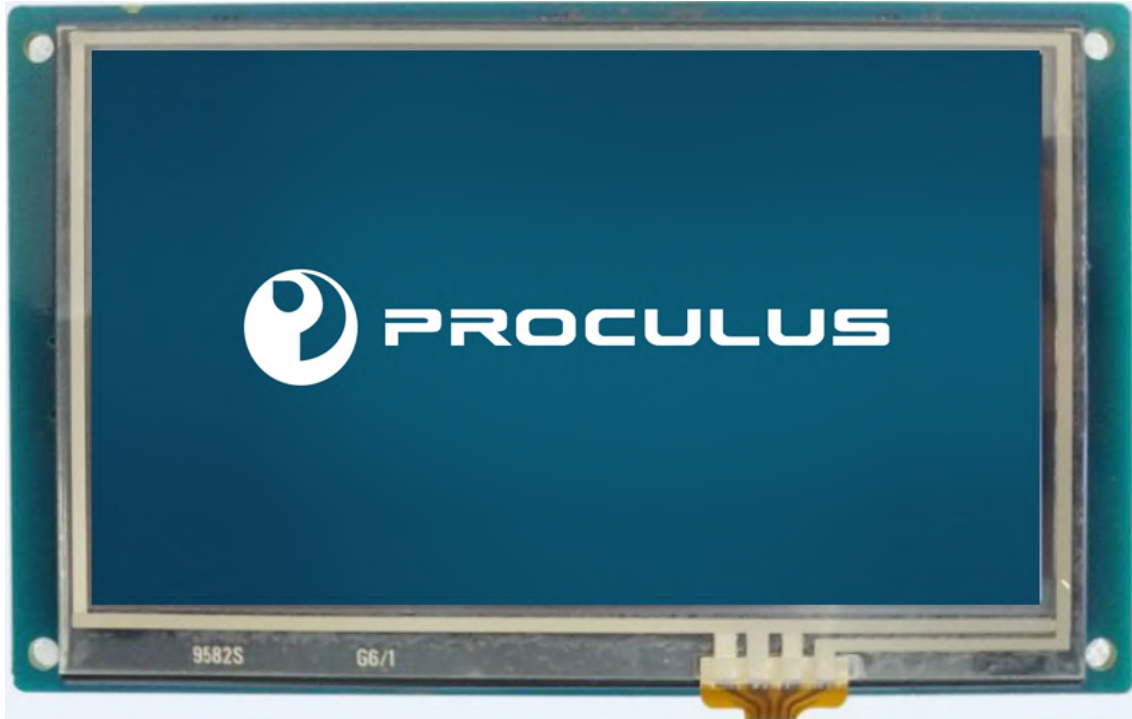


P48272J43L_T01

4.3 Inches, 480xRGBx272, 65K Colors, UnicView LCM



● Display

Item	Parameter	Description
Color	65K (65536) colors	16 bit color 5R6G5B
Resolution	480*272	90° rotated display (272*480)
Working Temperature	-20~+70°C/-30~+85°C	64 levels adjustment

● Voltage & Current

Item	Conditions	Min	Typ	Max	Unit
Power Voltage	-	4.8	5	15	V
Operation Current	VIN = 5V, Backlight on	-	450	-	mA
	VIN = 5V, Backlight off	-	260	-	mA
Recommend Power Input: 12V1A DC					
Power Supply Circuit	R66 on	-	5	-	V
	R66 off	4.6	12	18	V
When R66 is on, if customer's power supply is not stable enough, soldering is necessary to ensure 5v is enabled.					

● Reliability Test

Item	Conditions	Min	Typ.	Max	Unit
Working Temperature	60%RH at 5V voltage	-20	25	70	°C
Storage Temperature	-	-30	25	85	°C
Working Humidity	25°C	10%	60%	90%	RH
Protective Paint	-	-	None	-	-
Aging Test	-	-	8	-	H

● Interface

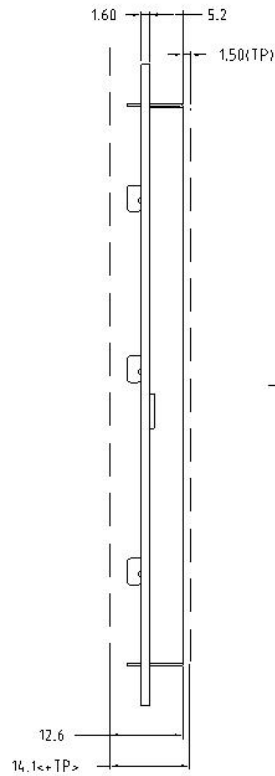
Item	Conditions	Min	Typ.	Max	Unit
Baud Rate	Standard	1200	115200	921600	bps
	User define	1200	-	921600	bps
Output Voltage (TXD, BUSY)	Output 1, Iout = 1mA	3.0	3.2	-	V
	Output 0, Iout = -1mA	-	0.1	0.2	V
Input Voltage (RXD, I/O)	Input 1, Iin = 1mA	2.0	3.3	15.0	V
	Input 0, Iin = -1mA	-15.0	0.0	0.3	V
Interface	8N1 3.3V TTL/CMOS(TTL only)				
Socket	XH2.54-4P/10Pin_1.0mm FFC				
USB	None				
SD Slot	Yes (SDHC, FAT32 file format), Download directory name" Proculus"				

● Memory

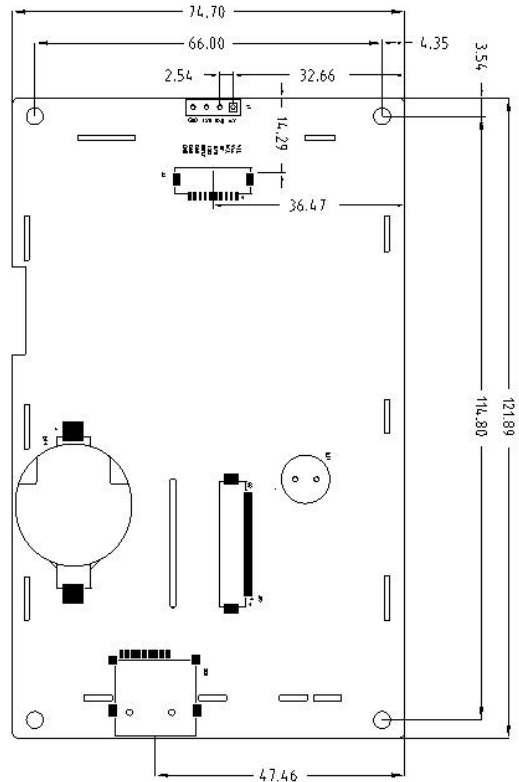
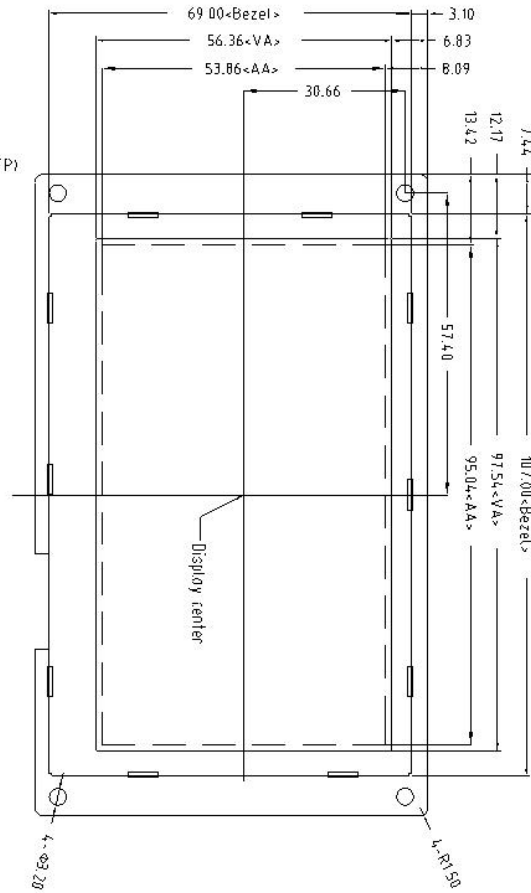
Item	Parameter	Min	Typ.	Max	Unit
Flash	Space of Font	-	8	-	MB
	Picture Storage	-	7.5	-	MB
The total user storage is 15.5MB, and you can customize the space of Font and Picture					

● Peripherals

No.	Parameter	Description
1	Touch Screen	4-wire resistive touch screen
		4-wire capacitive touch screen
2	RTC	sample
		production
3	Buzzer	sample
		production
4	Audio Output	sample
		production
5	Video Input	sample
		production



技术要求:
1. 单位: mm
2. 未注公差 ±0.3;



J1 引脚编号	J3 引脚编号	引脚名称	引脚类型	说明
1	1,2,3	VCC	P	电源输入/Power input
-	7	BUSY	OUT	串口缓冲区满信号指示
3	6	TXD	OUT	RS232/TTL 数据输出
2	5	RXD	IN	RS232/TTL 数据输入
4	8,9,10	GND	P	公共地/GND
-	4	NC	-	未定义/Not Defined