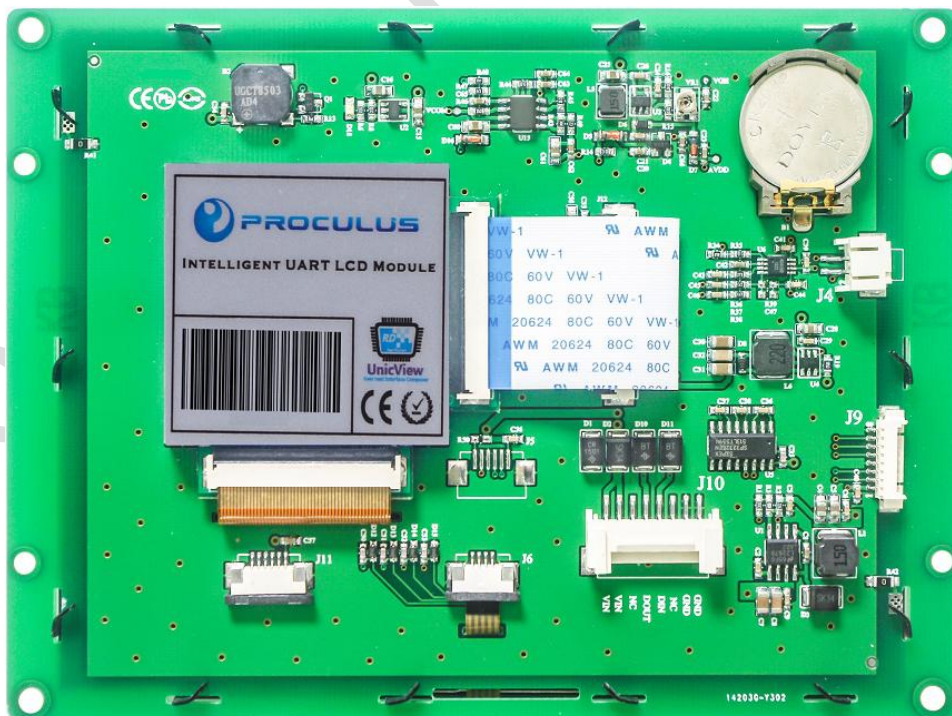


P64480V56I_T30

5.6 Inches, 640xRGBx480, 65K Colors, UNICView LCM



● Display

Item	Parameter	Description
Color	65K (65536) colors	16 bit color 5R6G5B
Visual Angle L/R/U/D	70° /70° /50° /70°	
Resolution	640*480	90° rotated display (480*640)
Backlight /Lifecycle/Brightness	LED/20,000 HOURS/ 300 cd/m ²	64 levels adjustment
Working Temperature	-20~+70°C/-30~+80°C	
Static ESD	±10KV	

● Voltage & Current

Item	Conditions	Min	Typ	Max	Unit
Power Voltage	-	6	12	40	V
Operation Current	VIN = 12V, Backlight on	-	240	-	mA
	VIN = 24V, Backlight on	-	130	-	mA
	VIN = 12V, Backlight off	-	110	-	mA

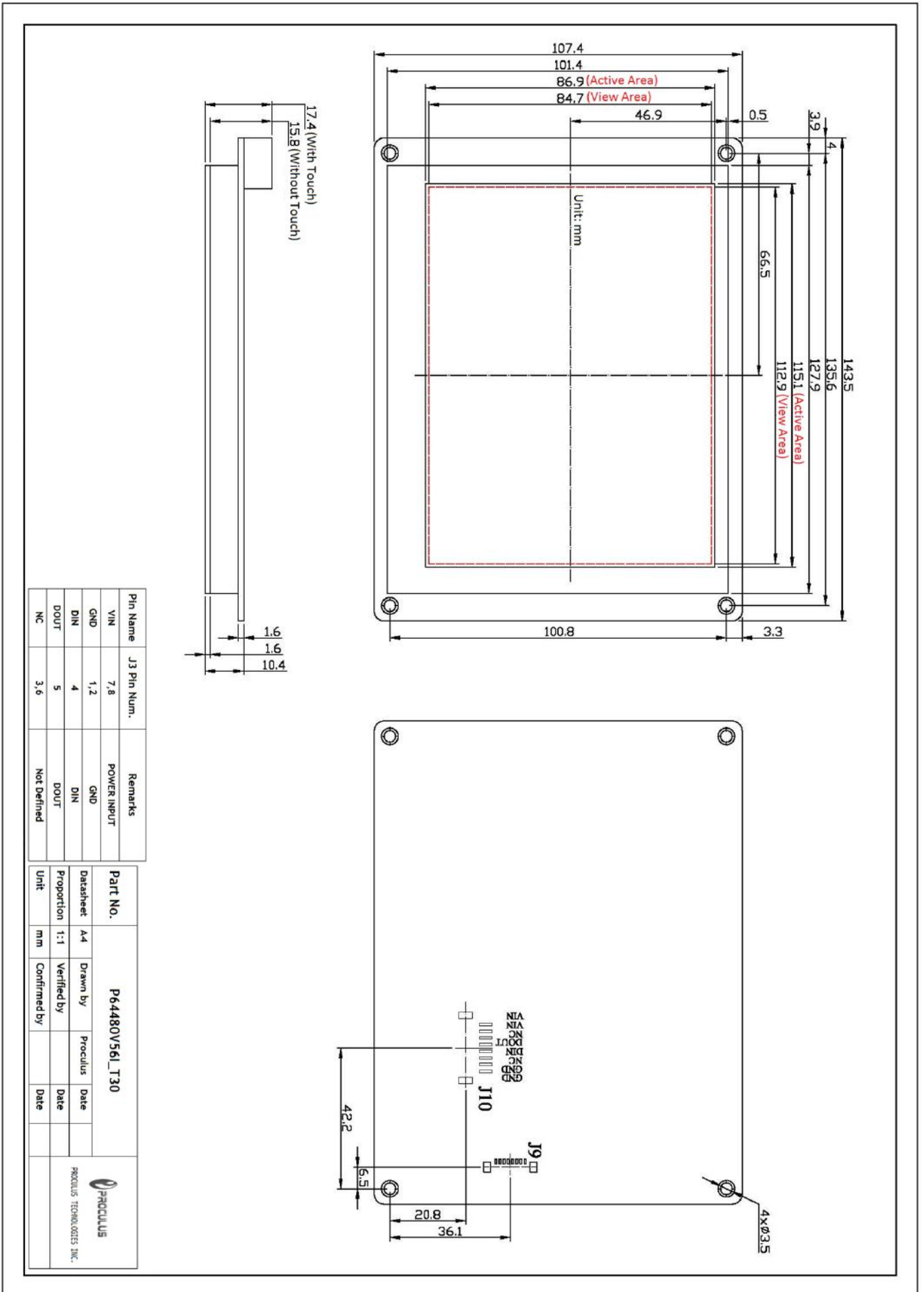
● Interface

Item	Conditions	Min	Typ	Max	Unit
Baudrate	Standard	1200	115200	892900	bps
Interface	RS232C				
Data Format	1 byte for initial, 8 bytes for data, invalid bytes for checksum, 1 byte for end				
Socket	SMD2.0-8P with lock catch				

● Peripherals

No.	Parameter	Description
1	Touch Screen	4-wire resistance touch screen: P64480V56I_T30
		4-wire capacitive touch screen: P64480V56I_P30
		No touch screen: P64480V56I_N30
2	Buzzer	YES
3	RTC	YES
4	USB	YES. For downloading offline or user data copy.
5	USB Mini	YES. For online debugging.
6	Audio	Support *.MP3 files. Theoretically 4096 file in maximum. Speaker power: 4 Ω 2W or 8 Ω 2W.
7	Keyboard	Support external row keyboard.
8	Memory	128M(support *.jpg files, maximum 65536 files theoretically)





Pin Name	J3 Pin Num.	Remarks
VIN	7,8	POWER INPUT
GND	1,2	GND
DIN	4	DIN
DOUR	5	DOUR
NC	3,6	Not Defined

Part No.		P64480V561_T30	
Datasheet	A4	Drawn by	Proclus
Proportion	1:1	Verified by	
Unit	mm	Confirmed by	
		Date	
		Date	

PROCLUS
PROCLUS TECHNOLOGIES INC.