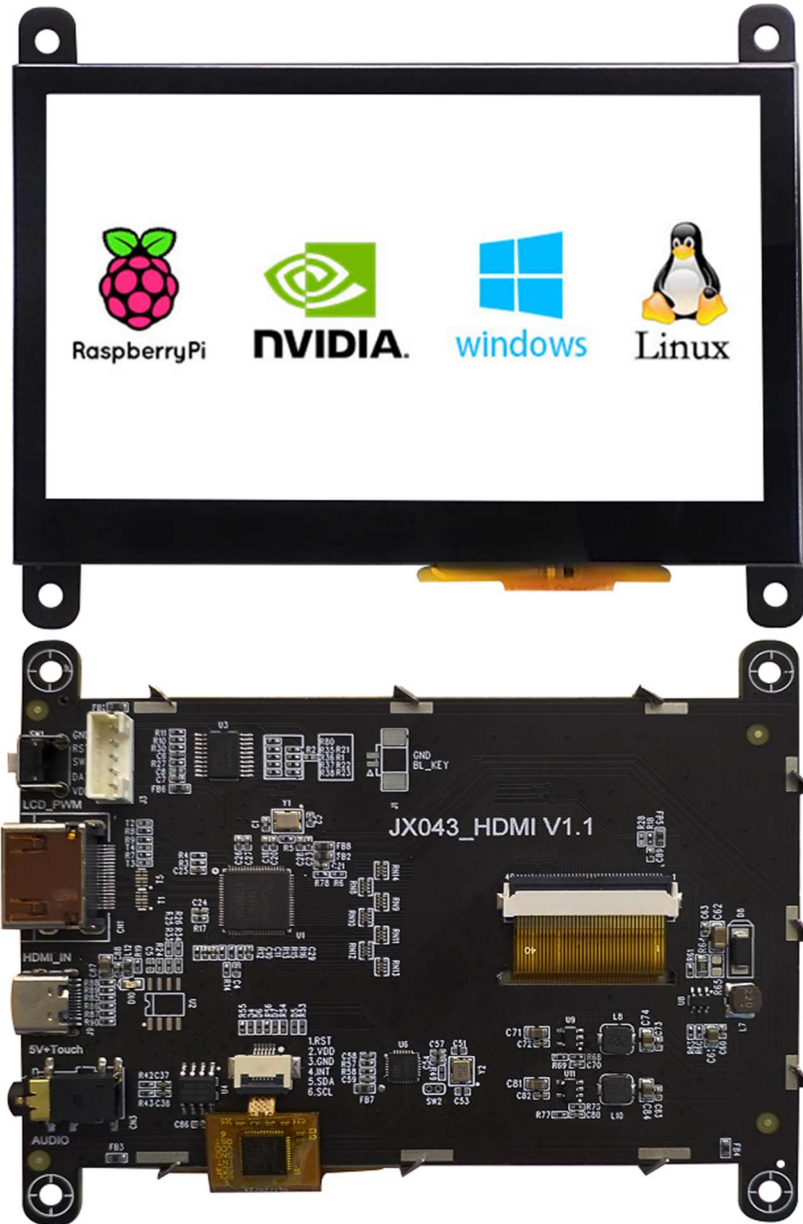


# P80480HDMI043\_P01

**4.3 Inches, 800xRGBx480, 16.7M Colors, HDMI series**



P80480HDMI043\_P01 is a liquid crystal display module based on HDMI interface of Proculus Technologies. The product is equipped with a 4.3inch true color LCD screen and capacitive touch screen. The client interface includes HDMI data video interface, USB power supply and capacitive touch screen control interface, audio output interface, and backlight setting buttons; A control and drive circuit, which is convenient for customers to develop and use.

Widely used in industrial control, instrumentation, medical equipment, security monitoring, vehicle display, bank bill acceptance instruments, POS machines and other occasions and other industries and fields

Note: There is no key structural process modification or major layout adjustment. Only the product process or reliability changes and iterations, the company will not initiate changes to the outside world, and the specific items will prevail.

Product Information	
Type number	P80480HDMI043_P01
Processor	High-performance HDMI receiving unit
Product Series	HDMI series
Firmware upgrade	USB
Touch Type	Capacitive touch screen, five-point touch
Touch Interface	USB TYPE-C (J9)
HDMI Specification	HDMI 1.4
HDMI Interface	HDMI 19P (CN1)
Power Interface	USB TYPE-C (J9)
Audio Interface	3.5mm PJ-342 (CN3)

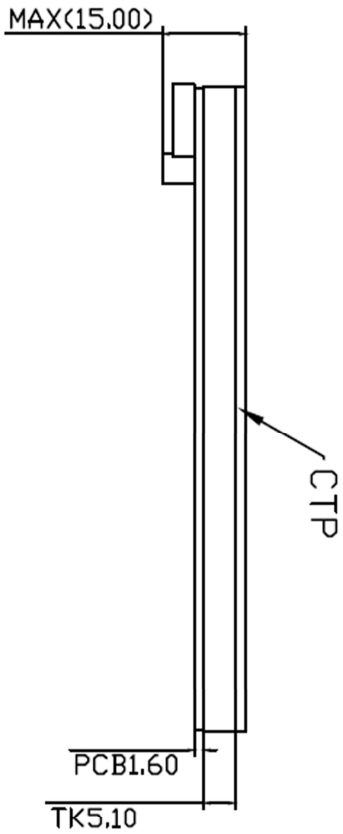
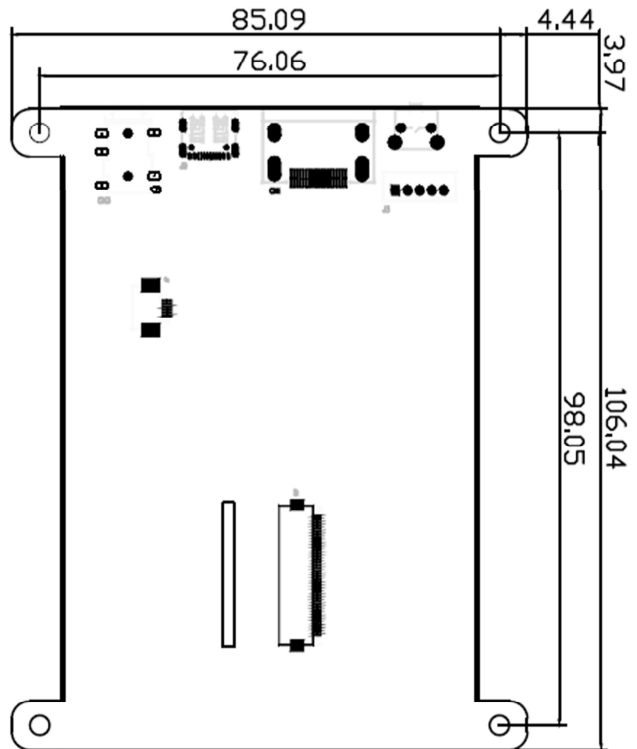
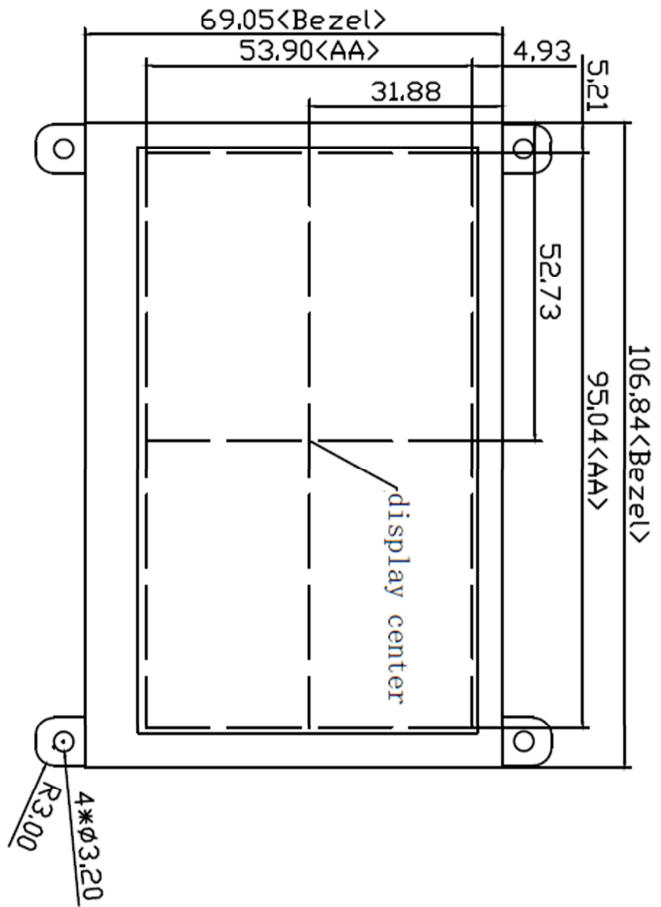
Display	
Color	16.7M (16777216) colors, 24-bit color 8R8G8B.
Active Area (A.A.)	95.04mm(W) × 53.9mm(H)
Panel Type	IPS, TFT-LCD
Resolution	800×480
Brightness	300nit Without a touch 250nit With the touch
Brightness	40000H

Note:Continuous working with maximum brightness, time of brightness halves; If the high contrast static display exceeds 30 minutes or more may cause LCD screen residual, it is recommended to increase the screensaver to avoid this problem.

Optical Specifications						
Item	Symbol	Condition	Min.	Typ.	Max.	Unit
Viewing Angle (CR≥10)	θL	Φ=180° (9 o' clock)	—	85	—	Degree
	θR	Φ=0° (3 o' clock)	—	85	—	
	θT	Φ=90° (12 o' clock)	—	85	—	
	θB	Φ=270° (6 o' clock)	—	85	—	

Voltage & Current					
Item	Condition	Min.	Typ.	Max.	Unit
Power Voltage		4.7	5	5.3	V
Operation Current	VCC= +5V, without speaker	—	500	—	mA
	VCC= +5V, with speaker	—	640	—	mA


Reliability Test					
Item	Condition	Min.	Typ.	Max.	Unit
Working Temperature	60%RH at 12V voltage	-20	25	70	°C
Storage Temperature	—	-30	25	85	°C
Working Humidity	25°C	10%	60%	85%	RH
Protection Paint	—	—	None	—	—
Certification & Levels	IEC4、CE、RoHS				



1. Location hole is used as position reference

2. Unmarked Tolerance is  $\pm 0.3\text{mm}$

Active area is marked in Dash lines

Part No.	P80480HDMI043_P01				
Datasheet	A4	Drawn by	Proculus	Date	
Proportion	1:1	Verified by		Date	
Unit	mm	Confirmed by		Date	