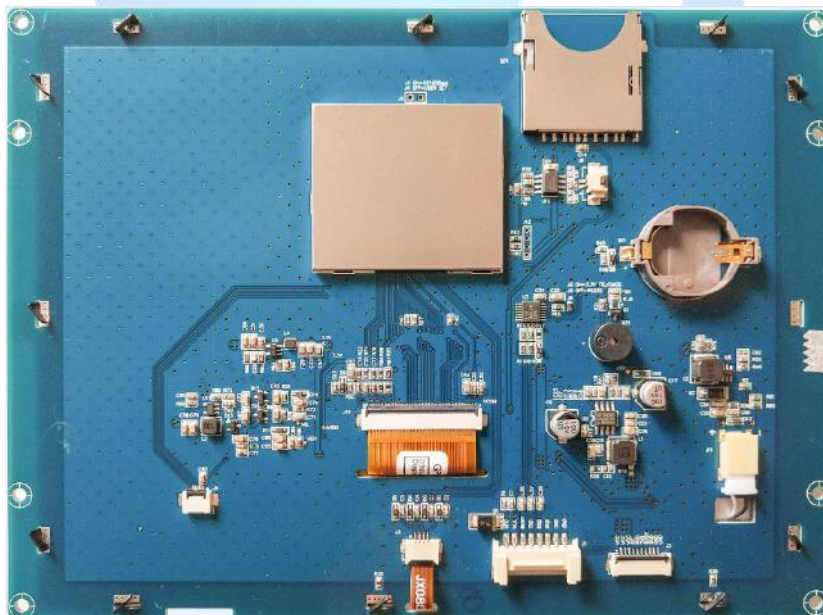


# P80600J80C\_X01

(X can be defined as N/T/P; N=No Touch/T=Resistive Touch/P=Pcap Touch)

## 8.0 Inches, 800xRGBx600, 65K Colors



### Modification Record

Date	Content
2016/09/05	First release
2018/04/19	Audio interface added

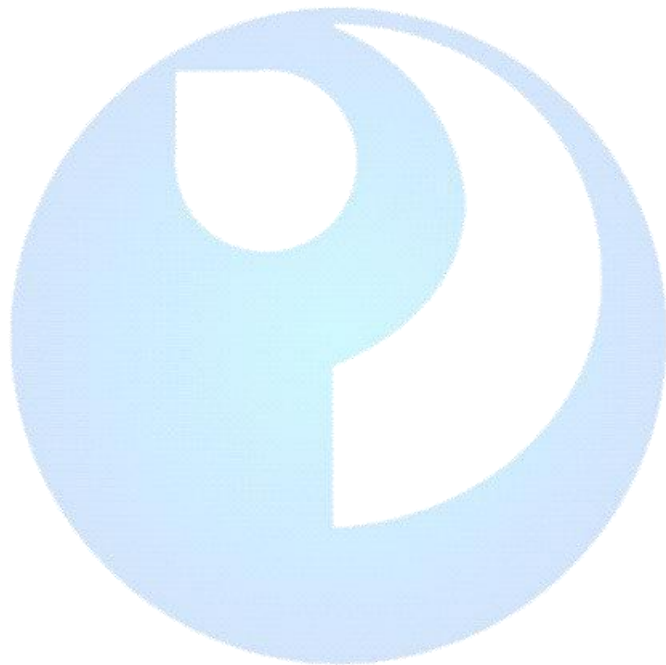
## Features

- Support RS232/TTL/CMOS, the max baud rate is 921600bps;
- Support audio
- Support hardware JPG decoding which makes storage more efficient and display quicker;
- Support offline batch download through USB Flash Drive, which improves download efficiency and reduce requirements for operators;
- Support backlight brightness adjustment and automatic standby screen saver function;
- Support multi-language font library, picture, TWO-DIMENSIONAL code display;
- Support number and English input, customizable keyboard interface;
- Support 90 degrees, 180 degrees, 270 degrees screen rotation, adjustable visual angle;
- Easy-to-use UnicView GUIs Development, no coding skills required;
- Instant operation when power on without system load time;
- Excellent electromagnetic compatibility characteristics.

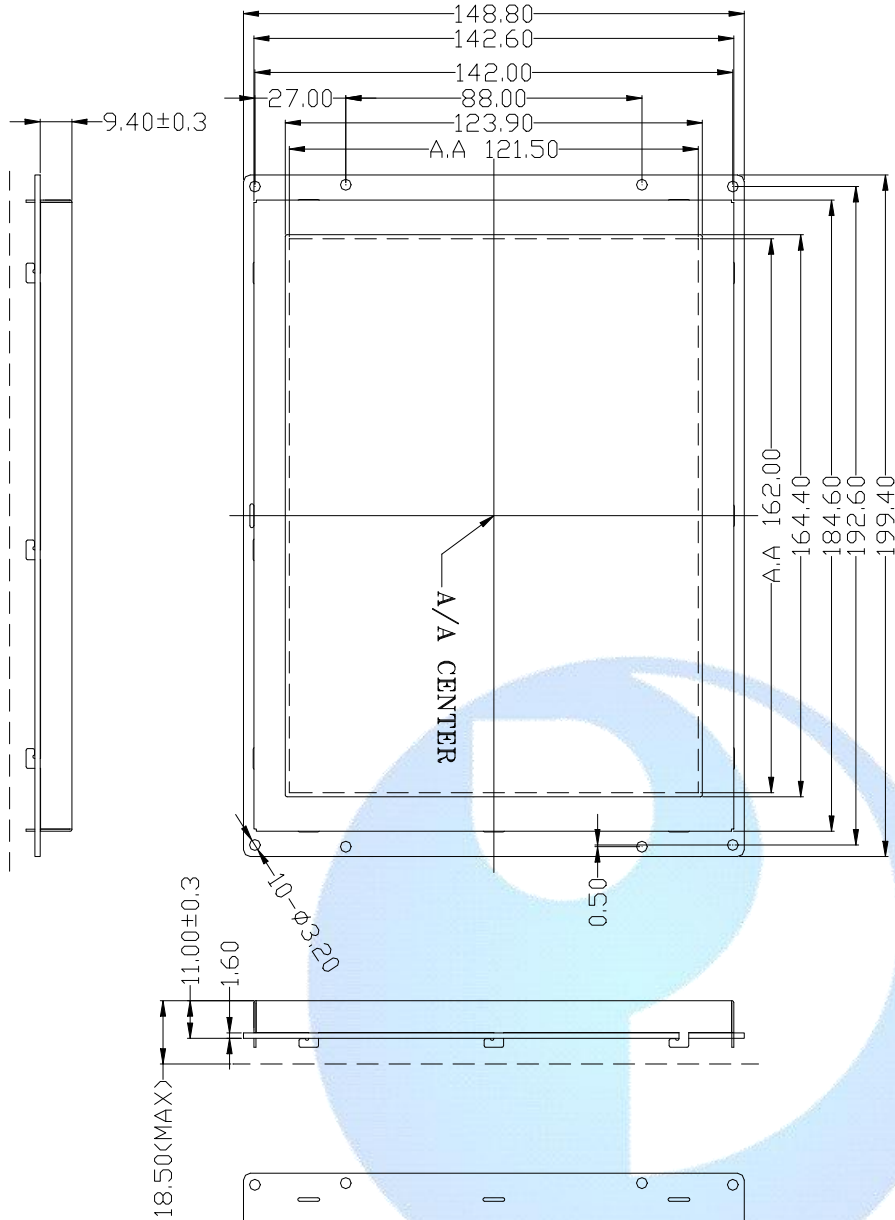
Display					
<b>Color</b>	65K (65536) colors, 16 bit color 5R6G5B				
<b>ACTIVE AREA / View Area</b>	162.0mm(width)×121.5mm(height)/164.8 mm(width)×124.3 mm(height)				
<b>Resolution</b>	800*600, 90° rotated display (600*800)				
<b>Backlight /Lifecycle/Brightness</b>	LED/20,000 HOURS/ 300 cd/m <sup>2</sup> / (64 level adjustment)				
<b>Working Temperature</b>	-10~+60°C/-30~+85°C				
Voltage & Current					
Item	Condition	Min.	Typ.	Max.	Unit
<b>Power Voltage</b>		—	12	—	V
<b>Operation Current</b>	VIN = 12V, Backlight on	—	330	—	mA
	VIN = 12V, Backlight off	—	160	—	mA
Recommended Power Supply: 12V 1A DC					
Reliability Test					
Item	Condition	Min.	Typ.	Max.	Unit
<b>Working Temperature</b>	60%RH at 12V voltage	-10	25	60	°C
<b>Storage Temperature</b>	-	-30	25	85	°C
<b>Working Humidity</b>	25°C	10%	60%	90%	RH
<b>Protective Paint</b>	-	-	None	-	-

<b>Aging Test</b>	-	-	8	-	H
<b>Interface</b>					
<b>Item</b>	<b>Condition</b>	<b>Min.</b>	<b>Typ.</b>	<b>Max.</b>	<b>Unit</b>
<b>Baud Rate</b>	Standard	1200	115200	921600	bps
	User Defined	1200	-	921600	bps
<b>Output Voltage (TXD、 BUSY)</b>	Output 1,Iout=1mA	3.0	3.2	-	V
	Output 0,Iout=-1mA	-	0.1	0.2	V
<b>Input Voltage (RXD)</b>	Input 1,Iin=1mA	2.0	3.3	15.0	V
	Input 0,Iin=-1mA	-15.0	0.0	0.3	V
<b>Interface</b>	Mode is determined by Jumper6: ON = 8N1, 3.3V TTL/CMOS; OFF = 8N1, RS232				
<b>Socket</b>	HY2.0-8P/10pin,1.0mm FFC				
<b>USB</b>	Reserved (If needed, please contact our sales representative.)				
<b>SD slot</b>	Yes (SD/SDHC, FAT32 file format)				
<b>Memory</b>					
<b>Item</b>	<b>Parameter</b>	<b>Min</b>	<b>Typ.</b>	<b>Max</b>	<b>Unit</b>
Flash	Space of Font	-	32	-	MB
	Picture Storage (128MB)	-	-	93	Pcs
	Picture Storage (256MB)	-	-	215	Pcs
	Picture Storage (1GB)	-	-	932	Pcs
	User' s Storage	0	-	32	MB
<b>Peripherals</b>					
<b>Buzzer</b>	Yes				
<b>RTC</b>	Yes				
<b>Resistive touch screen</b>	Yes				
<b>SD Card</b>	Yes				
<b>Audio</b>	Yes				
<b>Model number</b>					
<b>P80600J80C_N01</b>	No Touch				
<b>P80600J80C_T01</b>	Resistive Touch				
<b>P80600J80C_P01</b>	Pcap Touch				
<b>Packaging and physical dimensions</b>					
<b>Parameter</b>	<b>Data</b>				
<b>Dimensions</b>	199.4(width) ×148.8(height) ×17.8(thickness without TP) / 20.2(thickness with TP) mm				
<b>Net weight of single piece</b>	TBD				
<b>Weight of whole case</b>	TBD				
<b>Packing box size</b>	395mm(L)×330mm(W)×230mm (H)				

<b>Packing specification</b>	20 pieces /box
------------------------------	----------------



引脚名称	引脚编号	引脚类型	说明	引脚名称	引脚编号	引脚类型	说明
VCC	1, 2, 3	P	电源输入/Power input	VCC	1, 2	P	电源输入/Power input
NC	4	-	未定义/Not Defined	BUSY	3	-	串口缓冲区满信号指示
DIN	5	IN	串口输入/DIN	DOUT	4	OUT	串口输出/DOUT
DOUT	6	OUT	串口输出/DOUT	BUSY	5, 6	IN	串口输入/DIN
BUSY	7	-	串口缓冲区满信号指示	GND	7, 8	P	公共地/GND
GND	8, 9, 10	P	公共地/GND				



PACKAGE DIMENSIONS (UNIT: mm GENERAL TOLERANCE: ±0.30)