

P80600V80I_T30

8.0 Inches, 800xRGBx600, 65K Colors, UnicView LCM



● Display

| Item | Parameter | Description |
|--|---|-------------------------------|
| Color | 65K (65536) colors | 16 bit color 5R6G5B |
| Visual Angle L/R/U/D | 70° /70° /50° /70° | |
| Resolution | 800*600 | 90° rotated display (600*800) |
| Backlight /Lifecycle/Brightness | LED/20,000 HOURS/ 400 cd/m ² | |
| Working Temperature/ Storage Temperature | -20~+70°C/-30~+80°C | |
| Static ESD | ± 15KV | |

● Voltage & Current

| Item | Conditions | Min | Typ | Max | Unit |
|-------------------|--------------------------|-----|-----|-----|------|
| Power Voltage | - | 6 | 12 | 40 | V |
| Operation Current | VIN = 12V, Backlight on | - | 250 | - | mA |
| | VIN = 24V, Backlight on | - | 130 | - | mA |
| | VIN = 12V, Backlight off | - | 80 | - | mA |

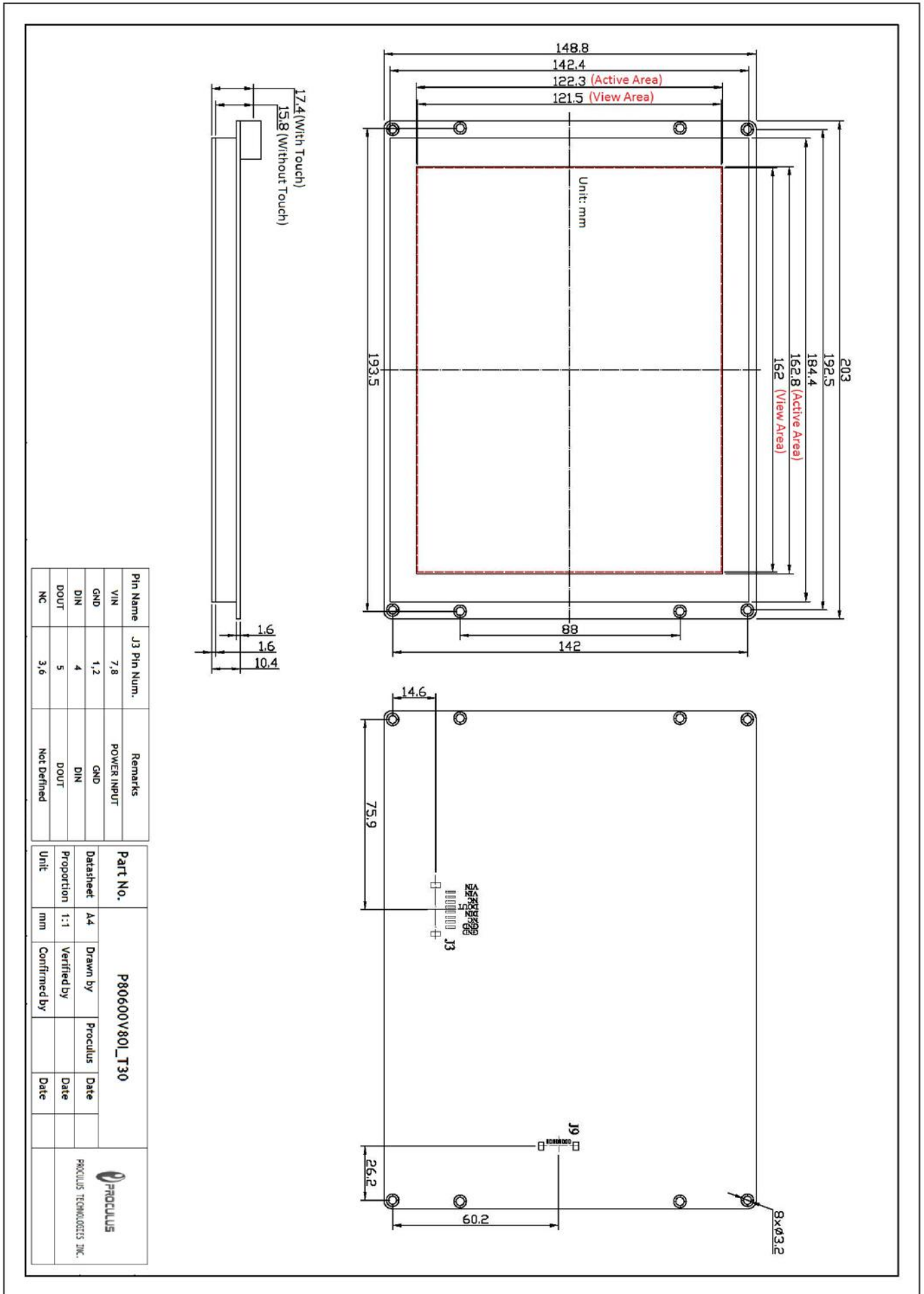
● Interface

| Item | Conditions | Min | Typ | Max | Unit |
|-------------|--|------|--------|--------|------|
| Baudrate | Standard | 1200 | 115200 | 892900 | bps |
| Interface | RS-232C | | | | |
| Data Format | 1 byte for initial, 8 bytes for data, invalid bytes for checksum, 1 byte for end | | | | |
| Socket | SMD2.0-8P with lock catch | | | | |

● Peripherals


| No. | Parameter | Description |
|-----|--------------|---|
| 1 | Touch Screen | 4-wire resistance touch screen: P80600V80I_T30 |
| 2 | Buzzer | YES |
| 3 | RTC | YES |
| 4 | USB | YES. For downloading offline or user data copy. |
| 5 | USB Mini | YES. For online debugging. |
| 6 | Audio | Support *.MP3 files. Theoretically 4096 file at maximum. Speaker power: 4 Ω 2W or 8 Ω 2W. |
| 7 | Keyboard | Support external row keyboard (8*8 maximum). |
| 8 | Memory | 128M(support *.jpg files, maximum 65536 files theoretically), extended to 1G at maximum. |





| Pin Name | J3 Pin Num. | Remarks |
|----------|-------------|-------------|
| VIN | 7, 8 | POWER INPUT |
| GND | 1, 2 | GND |
| DIN | 4 | DIN |
| DOU† | 5 | DOU† |
| NC | 3, 6 | Not Defined |

| Part No. | | P80600V80I_T30 | |
|------------|-----|----------------|---------|
| Datasheet | A4 | Drawn by | Proclus |
| Proportion | 1:1 | Verified by | |
| Unit | mm | Confirmed by | |
| | | Date | |
| | | Date | |


 PROCLUS TECHNOLOGIES, INC.